

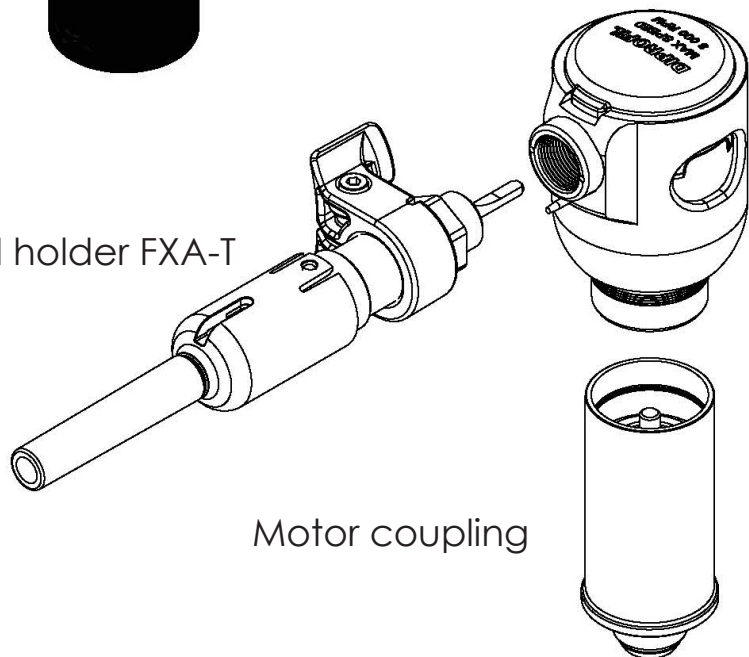


FPS/R

Spare Parts List
(Serial No. 4529 and higher)

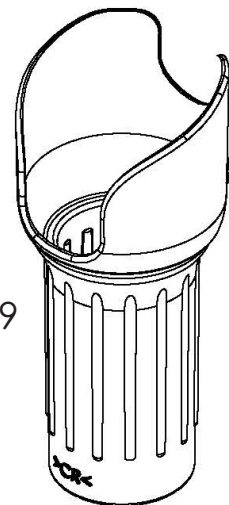
Machine housing FPM-G

Tool holder FXA-T

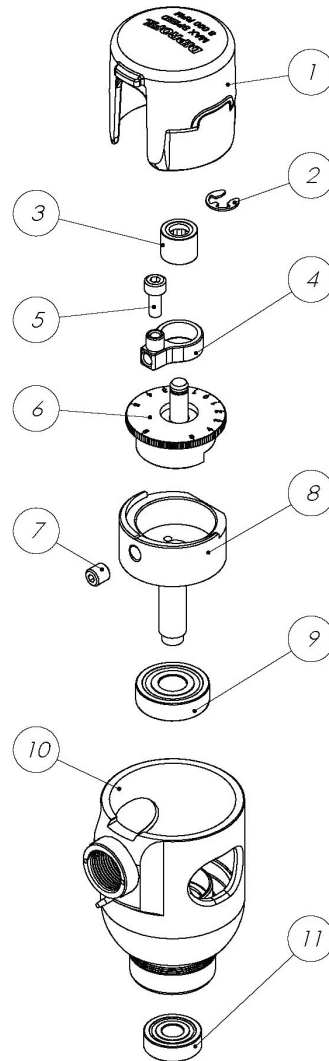


Motor coupling

Rubber sleeve FMM-9

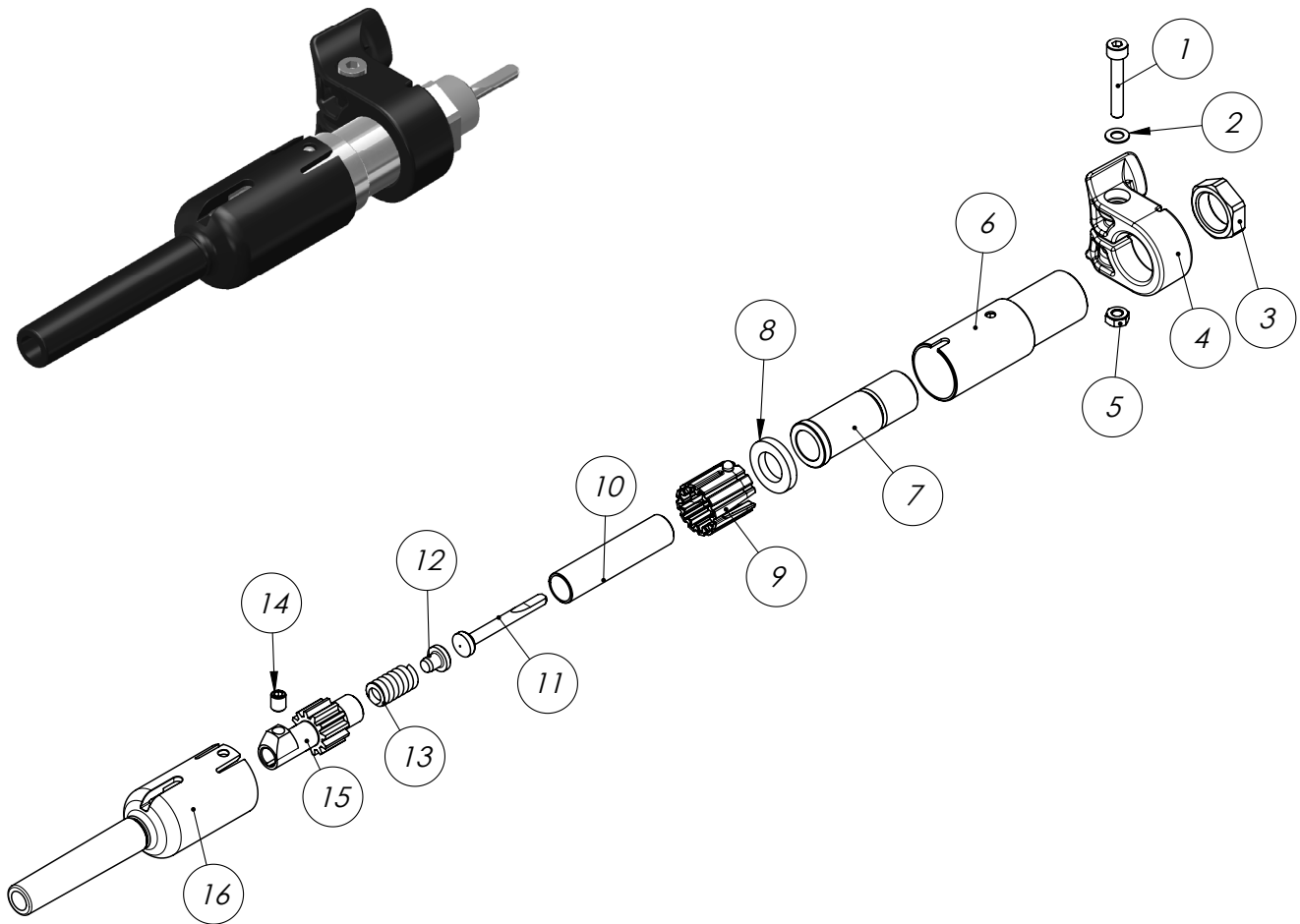


FPM-G - Spare Parts list



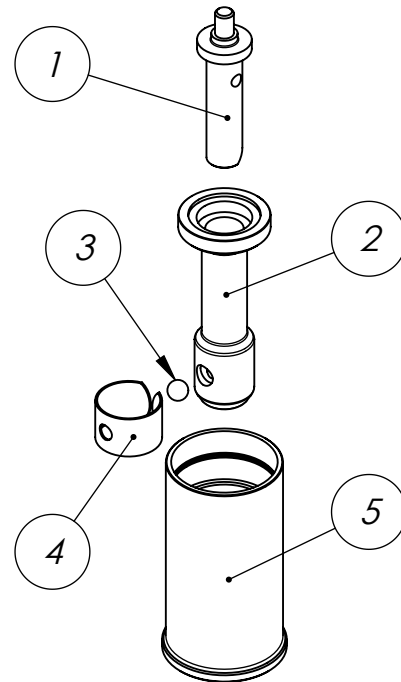
| Pos. | Item No. | Description. | Units / machine | Sub-Assembly |
|------|----------|---------------------------------|-----------------|--------------|
| 1. | FMM-5 | Machine cover | 1 | |
| 2. | FNE-47 | Circlip | 1 | |
| 3. | FNE-102 | Needle bearing | 1 | FNH-L |
| 4. | FNH-11 | Linkage | 1 | |
| 5. | 42053 | Screw for connecting rod | 1 | |
| 6. | FMM-K | Adjustable eccentric with shaft | 1 | |
| 7. | FNE-61 | Locking screw | 1 | |
| 8. | FPM-1 | Main spindle | 1 | |
| 9. | 44029 | Ball bearing | 1 | |
| 10. | FPM-L | Machine housing | 1 | |
| 11. | 44030 | Ball bearing | 1 | |

FXA-T - Spare Parts list



| Pos. | Item No. | Description. | Units / machine | Sub-Assembly |
|------|----------|--------------------|-----------------|--------------|
| 1. | 42001 | Screw | 1 | |
| 2. | 41000 | Washer | 1 | |
| 3. | FNH-21 | Retaining nut | 1 | |
| 4. | FXA-107 | Guide block | 1 | |
| 5. | 40000 | Nut | 1 | |
| 6. | FXA-100 | Guide sleeve | 1 | |
| 7. | FXA-102 | Supporting sleeve | 1 | |
| 8. | FXA-106 | Lubricating felt | 1 | |
| 9. | FXA-103 | Guide bushing | 1 | |
| 10. | FXA-105 | Piston | 1 | |
| 11. | FNH-14 | Connecting rod | 1 | FXA-V |
| 12. | FNH-16 | Spring insert | 1 | |
| 13. | FNH-17 | Spring | 1 | |
| 14. | 42055 | Tool locking screw | 1 | |
| 15. | FXA-101 | Tool holder part | 1 | |
| 16. | FXA-104 | Extension pipe | 1 | |

Motor Coupling/Flexible Shaft Connection, Ball-joint Key-hole (US standard) Spare Parts list



| Pos. | Item No. | Description. | Units / machine |
|------|-----------|------------------------|-----------------|
| 1. | FMS-3 | Spindle drive mounting | 1 |
| 2. | FMS-2 | Connecting sleeve | 1 |
| 3. | STK-7/32" | Steel ball | 1 |
| 4. | FNC-3 | Locking spring | 1 |
| 5. | FMK-1 | Handle sleeve | 1 |